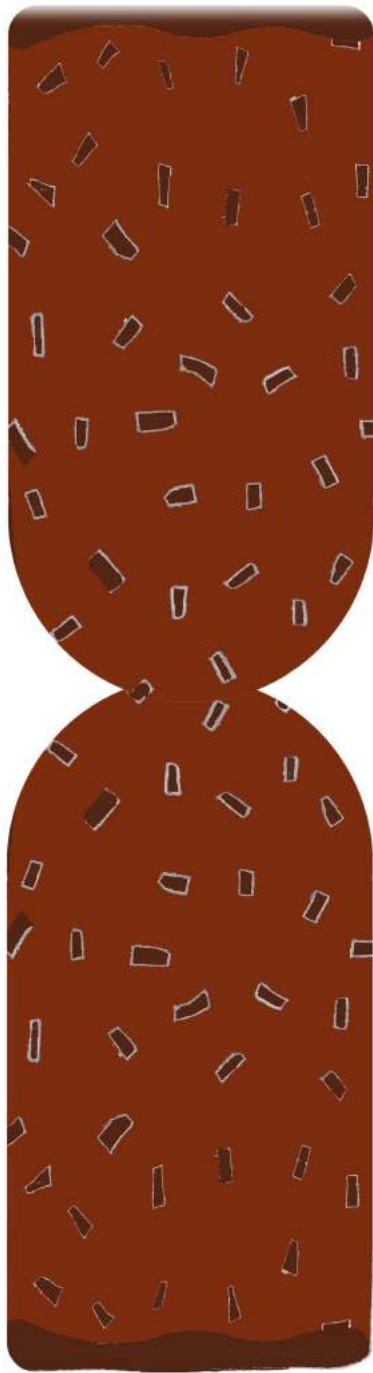


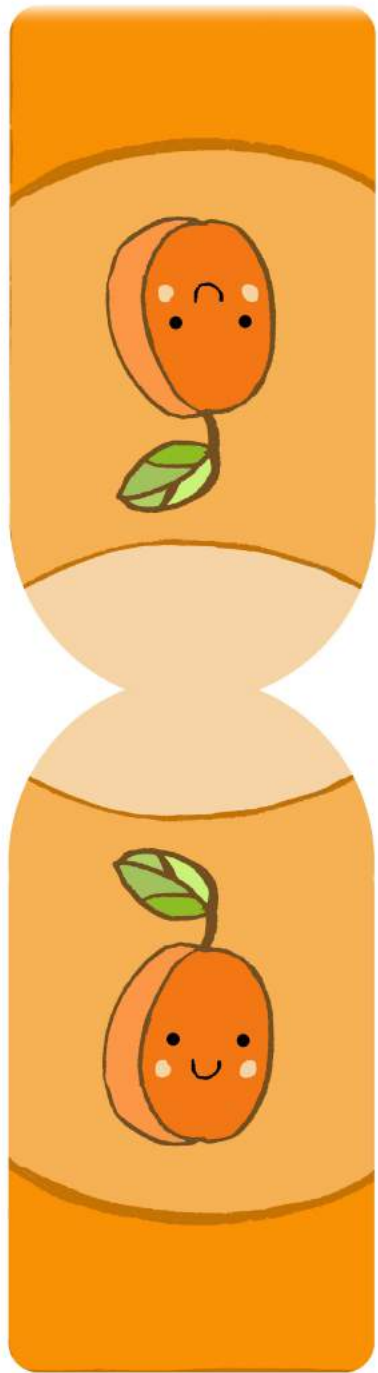
CARAMEL

CARAMEL



CACAO

CACAO



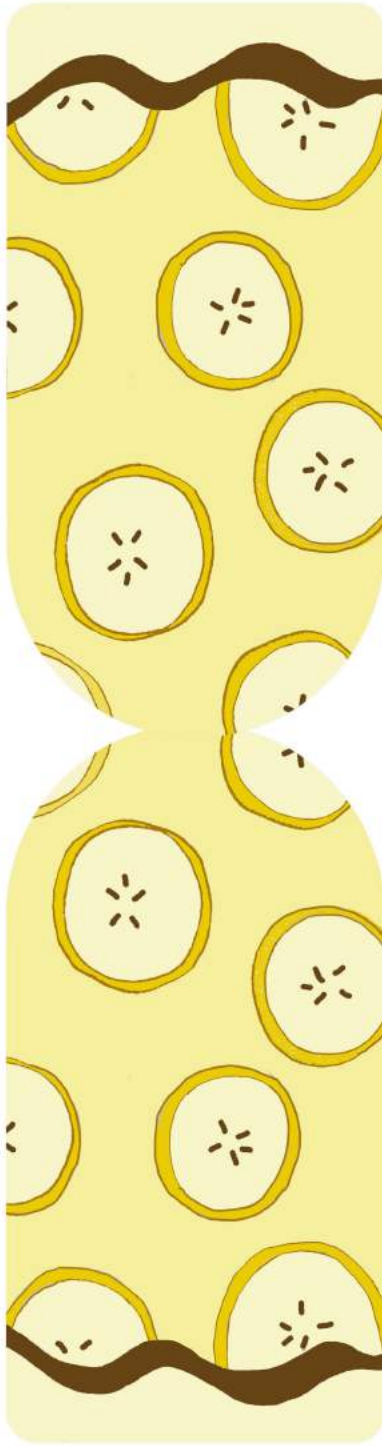
ABRICOT

ABRICOT



COCO

COCO



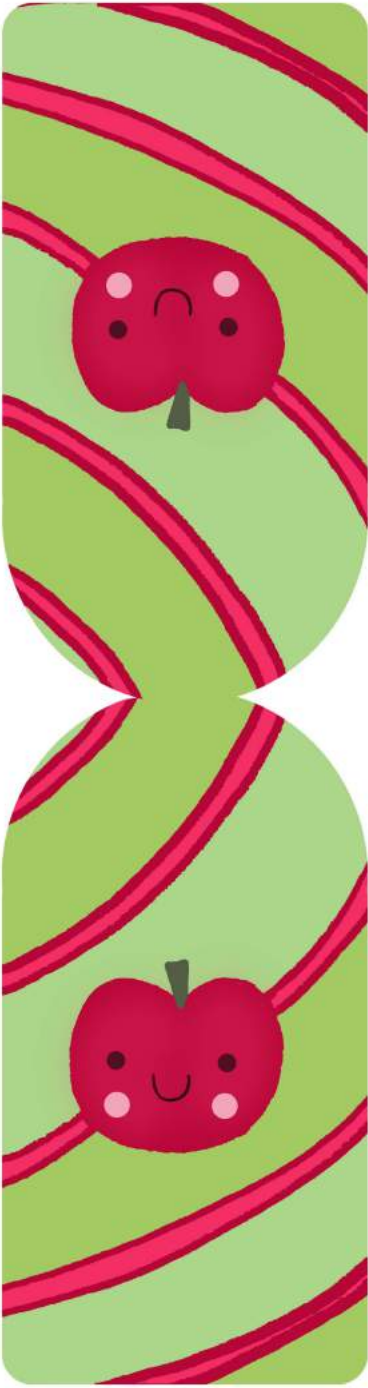
BANANE

BANANE



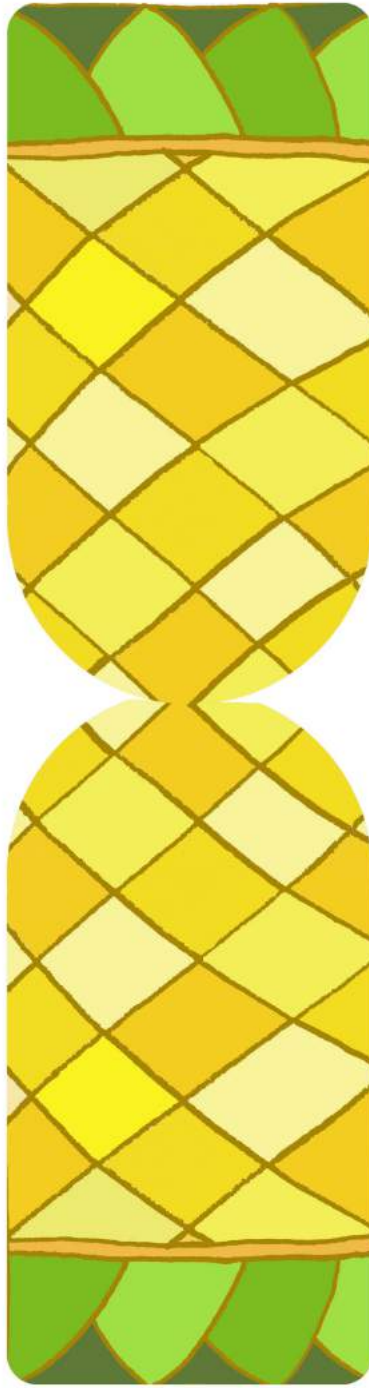
PASTÈQUE

PASTÈQUE



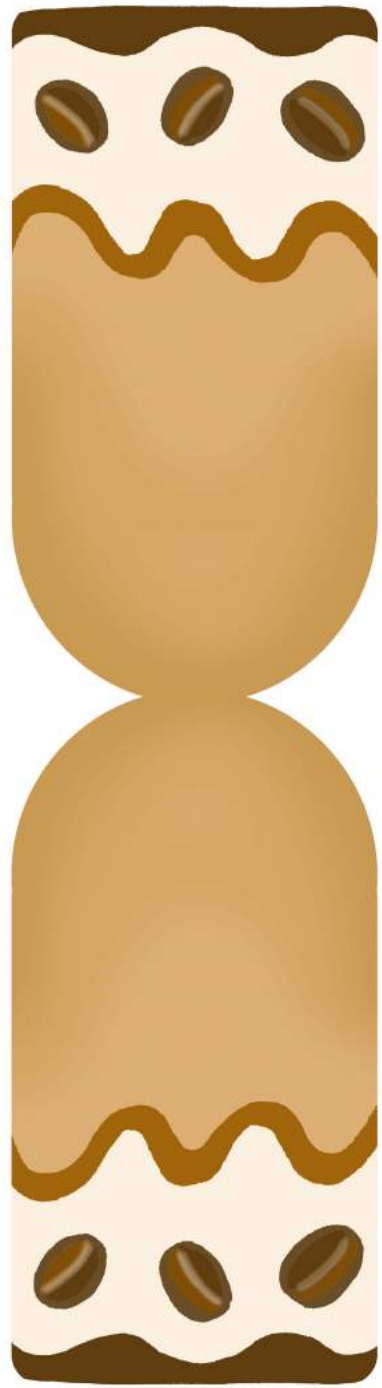
POMME

POMME



ANANAS

ANANAS



CAFÉ

CAFÉ



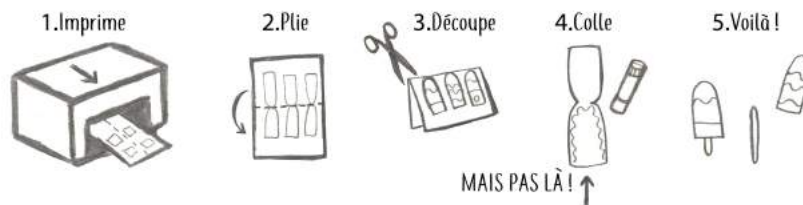
1-2 joueurs

lecture de mots

**But :** Assemble le bâton et la glace.

**Matériel:** - 9 glaces à construire et plastifier  
- 9 bâtonnets avec les parfums collés dessus

**Mise en place :**



**Déroulement:**

1. Mélange les glaces et les bâtons.
2. Lis et assemble les glaces et les bâtons.
3. Fais contrôler à quelqu'un.